

International Journal of Innovative Research in Science, Engineering and Technology

(A High Impact Factor, Monthly, Peer Reviewed Journal)

Visit: www.ijirset.com

Vol. 7, Issue 11, November 2018

Traffic Control Management for Connectivity Roads from Hyderabad to Warangal High Way (NH163)

Porika Vikasraj, B KALPANA

M.Tech, Department of Transportation, Arjun College of Technology & Sciences, Mount Opera Premises,
Batasingaram (V), (M), Hayathnagar, Hyderabad, Telangana, India

Assistant Professor, Arjun College of Technology & Sciences, Mount Opera Premises, Batasingaram (V), (M),
Hayathnagar, Hyderabad, Telangana, India

ABSTRACT: Due to the ever increasing need for transportation, there will be increasingly automobile overloads except if some sweeping measures are taken. There are numerous conceivable approaches to diminish blockage, (for example, constructing new streets, new evaluating strategies, move of transport from street to prepare or send, et cetera). In any case, since activity blockage is a squeezing issue that seriously affects both the economy and nature, there unquestionably is a requirement for measures that can be executed on the here and now. In this paper we talk about from a frameworks and control perspective a portion of the techniques that can be utilized to decrease activity clog issues. We will center around Warangal high way (NH 164) and ring streets First we quickly examine the Automated Highway Systems (AHS) structure, which prompts a decrease of activity clog and to a superior utilization of the accessible limit of the transportation organize. Be that as it may, a few impediments still must be defeated before AHS can be executed on an expansive scale. Consequently, we will broadly talk about another, all the more promptly implementable advance towards the decrease of movement blockage, in particular the improvement of cutting edge activity administration frameworks (ATMS), which is the subject of an examination venture at present being completed by the creators. ATMS utilize propelled displaying, recreation, streamlining and media transmission procedures to create and to actualize different activity strategy measures to decrease movement blockage. The between vehicle detachment, which relies upon the vehicle braking ability, control circle delays and working velocity, is then used to process site-autonomous upper limits on AHS limit with regards to a given blend of vehicle classes. The affectability of the limit as for the level of between vehicle participation, registration strategies (administering least adequate vehicle-braking capacity), thruway speed cutoff points, and path utilize arrangements (overseeing the sharing of a path by numerous vehicle classes) is additionally examined.

I. INTRODUCTION

As we set out from one place to other place in metro city, we pass no of streets and turns. Consider that there is some issue on street and you need to hold up till that issue clears then you are stuck in rush hour gridlock. In a similar sense, when you send a demand it is conceivable that because of some issue or different solicitations you need to sit tight for quite a while. On the off chance that no of bundles are lining and holding up in organize then it results in rush hour gridlock. In the event that once movement made, you should hold up till it over, which is certainly not settled or rely on current circumstance. So to manage this circumstance, there must be some approach to manage this circumstance. Web activity is dynamic issue. Static arrangements are not adequate. Activity administration required notwithstanding amid over-burden. And furthermore activity administration required for constant media.

International Journal of Innovative Research in Science, Engineering and Technology

(A High Impact Factor, Monthly, Peer Reviewed Journal)

Visit: www.ijirset.com

Vol. 7, Issue 11, November 2018

Transportation Management Plan:

As a component of the pledge to security and undertaking uprightness, ODOT makes the Transportation Management Plan (TMP) a required bit of all ODOT parkway development contracts inside State thruway right of way. ODOT support tasks and allowed work are urged to utilize a TMP, yet it's anything but a prerequisite. Developing clog on numerous streets, and an expanding need to perform recovery and remaking chip away at existing streets as of now conveying movement, are a portion of the issues that have prompted extra, more perplexing difficulties to keeping up work zone security and versatility. The third essential component of the Rule requires the improvement of undertaking level methods to address the work zone effects of individual activities. These task level systems incorporate recognizing ventures that an office expects will cause a generally abnormal state of disturbance (alluded to in the Rule as noteworthy activities) and creating and actualizing transportation administration designs (TMPs) for all undertakings

II. LITERATURE REVIEW

Rokade S., Singh K., Katiyar S.K. (2010) Movement control of urban street systems amid crisis salvages is helpful for quick protect in the influenced regions. In any case, extreme control will prompt negative effects on the typical movement arrange We propose a novel model to upgrade the activity control plot amid the post-calamity crisis save period named PD-TCM In this model, the vertex and edge between ness files of urban street systems are acquainted with assess the controllability of the street segments.

Rakesh Kumar Singh and S.K.Suman (2012) as of late numerous researchers have directed research on typical movement administration and streamlining and have accomplished productive outcomes. With the expansion of the event recurrence and mischief level of crises, a few analysts have started to focus on street activity administration and scattering under crisis conditions since the Many sociologists have contemplated the movement framework development, movement control framework and network debacle aversion.

Chiou, Y.- C.; Lai, Y.- H (2008) The street system will be effectively blocked when a tremor happens. Consequently, it is important to ponder the association dependability of the street arrange hubs and to pass judgment on the key areas and advance the crisis medicinal safeguard way trust that catastrophe readiness is viewed as the foundation of crisis administration. From the perspective of the entire nation, a nation needs to build up a national fiasco counteractive action structure and an entire network calamity avoidance framework.

SandelaHaripriya (2017) Pedestrians are the most casualties of street mishap on account of absence of mindfulness; when they proceed onward street they are not under any condition cognizant about mischance and the reason for mishap and the privilege of vehicle driver to utilize the street. Vehicle driver generally surpass the capacity of driving and vehicle.

III. METHODOLOGY

The activity levels on any proposed transport level officechoose the income stream for the undertaking and thus key to the budgetary suitability of the venture. To evaluate the movement levels on the proposed Expressway, the strategy embraced is depicted in different undertakings plot in the accompanying passages. The impact locale is required to be impact region because of the improvement of the new interstate. This will incorporate evaluation of movement anticipated that would be redirected from the current system to the proposed interstate and furthermore the prompted activity because of the new improvements in the impact district because of better availability, and openness given by the freeway.

Traffic management design process:

Transitory Traffic Management Plans will be set up by an equipped Designer (TTM) with involvement in rush hour gridlock administration and street development or structural building works, and having respect to the nature and many-sided quality of the works The Implementation of a Traffic Control System Aimed At Keeping Traffic Delays the

International Journal of Innovative Research in Science, Engineering and Technology

(A High Impact Factor, Monthly, Peer Reviewed Journal)

Visit: www.ijirset.com

Vol. 7, Issue 11, November 2018

readiness, in great time, of any necessities under street activity enactment; and the requirements of drivers, cyclists and people on foot and particularly any helpless street clients.

Management Strategies In Warangal High Way (Nh164):

Information identified with the development of vehicles, people on foot, bicycles, and so on a parkway. Normal movement information precedents are: Average day by day activity (ADT) volume and pinnacle hour volume, hourly activity volumes, vehicle arrangements, mishap information, and so forth o Roadway data Width, stature, weight, or other parkway confinements that farthest point vehicles going on an interstate. Distinguish any current stature, width, or weight limitations that are available on the roadway and also courses that might be utilized as checked or for crisis temporary routes. Natural, Geotechnical, and Hydraulic issues: Project site conditions that may affect venture transitory activity control. Natural, geotechnical and water driven issues may affect development plans, arranging, and so on (in-water work windows, and so forth.).

Traffic Pattern and Influence Area:

The travel pattern as derived from origin and destination survey analysis reveals the

Region/ Modes	Car	LCV/ M Bus	Bus	Truck	MAV (≥3A)
Telangana	72.1	59.2	63.0	56.3	47.9
Andhra Pradesh	21.7	24.1	28.6	24.0	19.4
Karnataka	6.2	10.1	8.4	10.2	15.2
Tamil Nadu	0.0	4.3	0.0	6.5	13.9
Maharashtra	0.0	2.4	0.0	3.0	3.6
Total	100.0	100.0	100.0	100.0	100.0

Taking a gander at the transcendence of Telangana, Andhra Pradesh and Karnataka in Cars and Busses, these three states have been considered as the PIA states for these vehicles.

IV. RESULTS

National Highway 163 (previously **NH 202**) is a National Highway in India that connections Hyderabad in Telangana and Bhopalpatnam street in Chhattisgarh. It was renumbered as NH 163Telengana states are considered in such a mold, to the point that the street systems give the required information for investigating "Basic Gap" and looking at the same between various methods of transport. Middle openings at four-path, six-path and eight path isolated urban streets are considered in the present examination. In this specific situation, it has been seen that middle openings are by and large given in high approaches to least stream of 500vehicles/day with a greatest speed cutoff of 70-80 km/h.

The information were gathered from six destinations of the Warangal (NH164) Roads situated in the southern piece of India. To speak to blended movement conditions in India, different mechanized modes, for example, bikes (2W), three wheelers (3W), four wheelers (4W), unique models of games utility vehicles (SUVs), are thought about and overwhelming vehicles like transports, trucks and multi-pivot vehicles are disregarded.

Geometrics Roadway:

Even arrangement for lion's share segment of the street is by and large fitting in with IRC principles. Anyway at couple of areas it was seen that level arrangement has little sweep (underneath 240m (km 437, km 443) for configuration speed of under 80kmph) not complying with IRC benchmarks, additionally a S bend at km 441, km 460 and km 509 with sharp span was watched. These areas have not been furnished with required control gadgets i.e. bend cautioning signs, chevron signs and speed limitation signs. Soak angle with substandard sight separate vertical bends have been watched for a stretch of 5 (km 502 to km 507). These areas are not given fundamental cautioning signs.

International Journal of Innovative Research in Science, Engineering and Technology

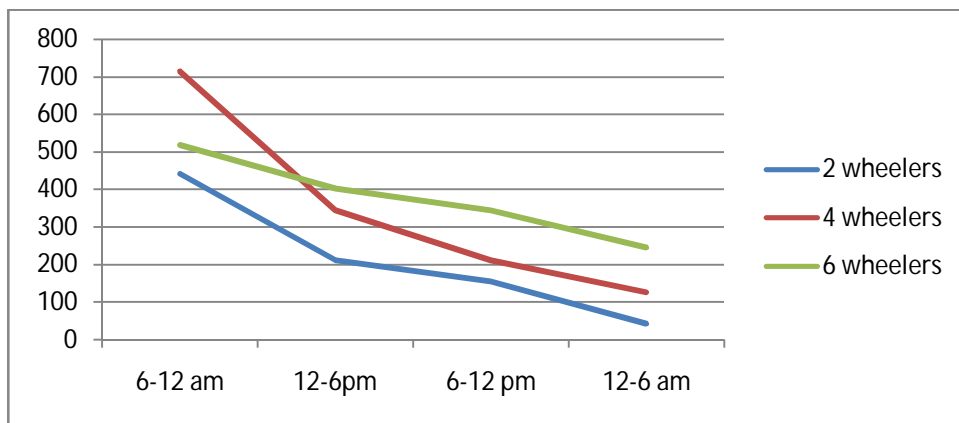
(A High Impact Factor, Monthly, Peer Reviewed Journal)

Visit: www.ijirset.com

Vol. 7, Issue 11, November 2018

Table: Warangal high way check post survey in all vehicles

time period	2 wheelers	4 wheelers	6 wheelers
6-12 am	442	714	519
12-6pm	212	345	403
6-12 pm	154	212	345
12-6 am	42	126	245



Graph: Warangal high way check post survey in all vehicles data



Figure: NH 164 Warangal

The prerequisite for catching information on street movement conditions has been around for a long time. The data is required by both, nearby and national government bodies, their advisors, property designers and open enquiries among others. The necessity to catch the data from the street side has prompt the formation of a foundation of expert movement study organizations who can gather the information from the roadside in a proficient and safe way the speed in which it's conveyed to the end customer or to decrease the expense of doing the overviews.

International Journal of Innovative Research in Science, Engineering and Technology

(A High Impact Factor, Monthly, Peer Reviewed Journal)

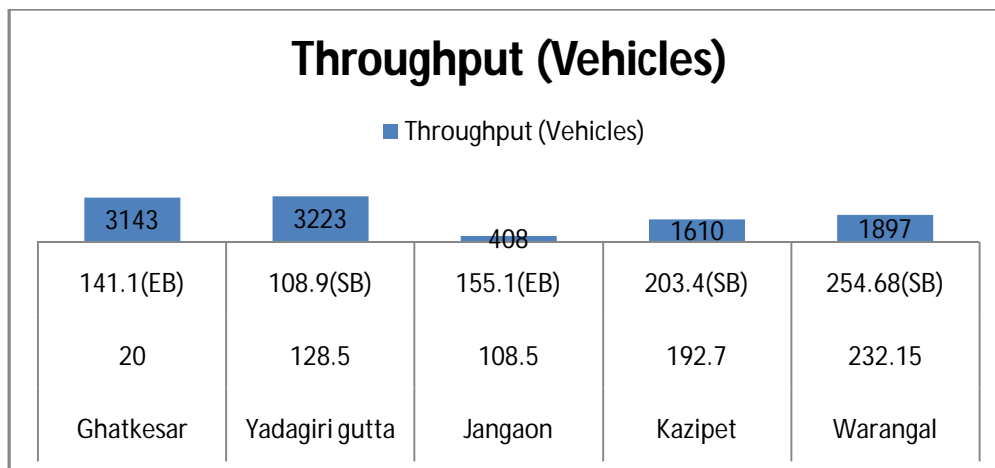
Visit: www.ijirset.com

Vol. 7, Issue 11, November 2018

Road Connectivity Analysis:

Existing Operating Conditions at the Study Intersections

Area	Delay (sec/veh)	Queue Length (m)	Throughput (Vehicles)
Ghatkesar	20	141.1(EB)	3143
Yadagirigutta	128.5	108.9(SB)	3223
Jangaon	108.5	155.1(EB)	408
Kazipet	192.7	203.4(SB)	1610
Warangal	232.15	254.68(SB)	1897



Graph: Existing Operating Conditions at the Study Intersections

Table: Operating Conditions on the implementation of the change in traffic circulation plan

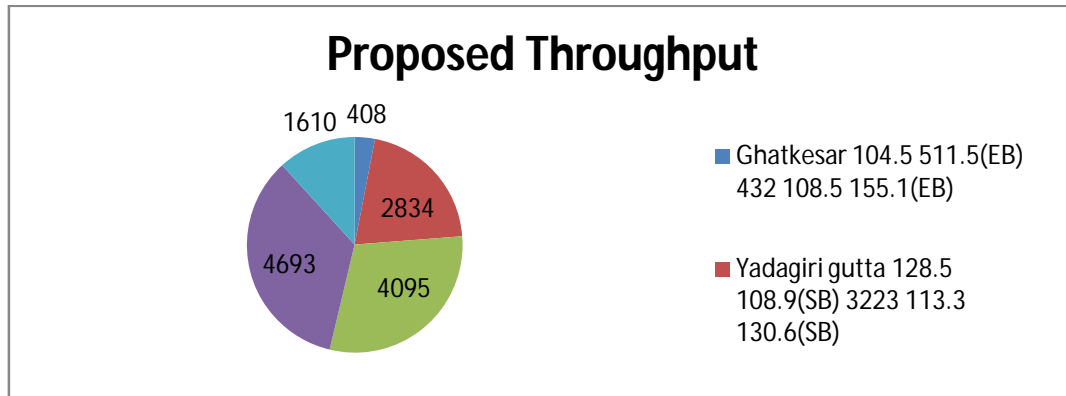
Intersection	Existing			Proposed		
	Delay (sec/veh)	Queue Length (m)	Throughput	Delay (sec/veh)	Queue Length (m)	Throughput
Ghatkesar	104.5	511.5(EB)	432	108.5	155.1(EB)	408
Yadagirigutta	128.5	108.9(SB)	3223	113.3	130.6(SB)	2834
Jangaon	90	154.2(WB)	3517	54.8	121.7(WB)	4095
Kazipet	49.3	262.5(WB)	4257	38.2	221.2(WB)	4693
Warangal	150.2	270.3(SB)	2146	192.7	203.4(SB)	1610

International Journal of Innovative Research in Science, Engineering and Technology

(A High Impact Factor, Monthly, Peer Reviewed Journal)

Visit: www.ijirset.com

Vol. 7, Issue 11, November 2018



Graph: Operating Conditions on the implementation of the change in traffic circulation plan

V. CONCLUSION

The impact district is relied upon to be impact territory because of the advancement of the new turnpike. This will incorporate evaluation of movement anticipated that would be redirected from the current system to the proposed road and furthermore the prompted activity because of the new advancements in the impact locale because of better network, and availability given by the interstate. Another imperative part in the estimation of activity and its income is toll. The ordinary strategy for estimation of movement on the new road will include estimation of activity development in view of estimation and utilization of flexibility approach. Developments in view of the financial parameters will likewise be utilized in the investigation. Task of both traveler and cargo movement to different elective courses in light of the movement expenses will be made. Summed up cost capacity will be utilized in estimation of aggregate expenses. The movement conjecture will be made for the distinctive skyline years and for various modes. The separation of the movement will incorporate occupied and created/initiated/formative activity. The estimation of formative movement will be founded on the proposed improvements in the Warangal roadway.

Future scope:

National Highways and State Highways must incorporate street wellbeing reviews and street security experts as a compulsory to guarantee usage of task securely. Highway watching framework along the whole National Highways ought to be made required so as to improve security on streets. Ambulances ought to be given up and down the National Highways. Substantial number of fatalities can be decreased if casualties are gone to inside the sensible time quickly after the mishap. It is hence fundamental to build up injury care focuses at suitable areas up and down the National Highway organize. All clumsy spots along the National Highways system ought to be Distinguished and appropriate designing measures as far as change of street geometrics and so forth ought to be taken.

REFERENCES

- [1] Dahee Hong, Jeonghyun KIM, (2005) Development Of Traffic Accident Prediction Models by Traffic and Road Characteristics In Urban Areas in Proceedings of the Eastern Asia Society for Transportation Studies, Vol. 5, pp. 2046 – 2061.
- [2] Fisher, D. L.,and Duffy, S. A. (2000). "The confining of drivers' course decisions when travel time data is given under fluctuating degrees of intellectual load." Hum. Variables, 42(3), 470– 481
- [3] Rakesh Kumar Singh and S.K.Suman (2012) , National Institute of Technology, Patna on Accident Analysis and Prediction Model on National Highways in International Journal of Advanced Engineering Technology in Vol.I, Issue 2,
- [4] Rakesh Kumar Singh and S.K.Sumanon (2012) Accident Analysis and Prediction of Model on National Highways in International Journal of Advanced Technology in Civil Engineering, ISSN: 2231 – 5721, Volume-1, Issue-2, 2012.
- [5] Rokade S., Singh K., Katiyar S.K. (2010) on Development Of Accident Prediction Model in International Journal of Advanced Engineering Technology E-ISSN 0976-3945 on Vol.I/Issue III/Oct.- Dec.,2010/25-40.